

Web Based Application

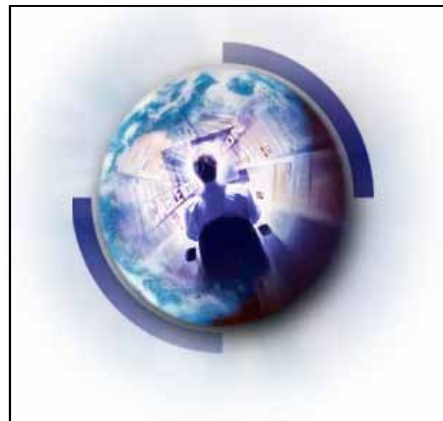
Micro FMS (Fleet Monitoring System)

- Real Time vehicle tracking interfacing with GIS on map.
- Shortest Route through Road as well as Rail to any particular location
- Details can be viewed using info box.
- Advance reports with various options.
- Vehicle Transit and Stopped Report.



GIS interface to website (WebGIS)

- Availability of GIS data and functionality over the Internet is referred to as a "**Web GIS**".
- GIS interface can be given to any website which contains spatial data.
- users can add different layers, attach data and look for analysis .
- Useful to all who deals with spatial and non-spatial data.



Project Application :

- 1) **WebGIS Interface in Water Quality**
- 2) **WebGIS Interface in Public Health.**
- 3) **WebGIS Interface in Forestry & Wildlife.**